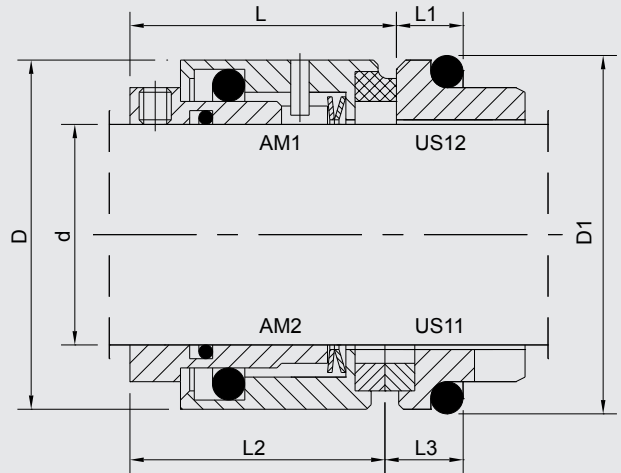
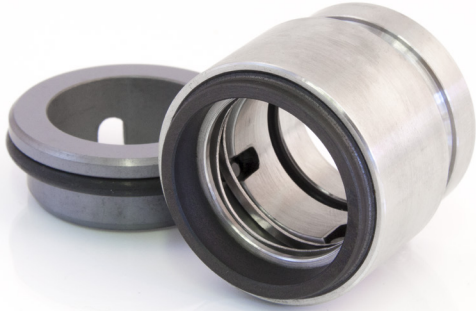


# Amsterdam

Wave spring seals



## Technical features

- Single seal
- Balanced
- Wave spring
- Bi-directional
- To DIN 24960

## Operating limits

P = 348 PSI  
 T = -95 to 320°F  
 V = 65 ft/s

Description	Materials
Primary rings	silicon carbide, tungsten carbide, carbon graphite
Mating rings	silicon carbide, carbon graphite, tungsten carbide, ceramic
Secondary seals	NBR, EPDM, Viton
Metal parts	Stainless 304 / Stainless 316*

\*upon request

## Available products:

- Amsterdam 1 (AM1)
- Amsterdam 2 (AM2)

## Mating rings

- For AM1: US12 (to DIN 24960)
- For AM2: US11 (to DIN 24960)

d	D	AM1 L	AM2 L2	US12 L1	US11 L3
18	32	30.5	28.5	33.0	7.0
20	34	30.5	28.5	35.0	7.0
22	36	30.5	28.5	37.0	7.0
24	38	33.0	31.0	39.0	7.0
25	39	33.0	31.0	40.0	7.0
28	42	35.5	33.0	43.0	7.0
30	44	35.5	33.0	45.0	7.0
32	47	35.5	33.0	48.0	7.0
33	47	35.5	33.0	48.0	7.0
35	49	35.5	33.0	50.0	7.0
38	54	37.0	34.5	56.0	8.0
40	56	37.0	34.5	58.0	8.0
43	59	37.0	34.5	61.0	8.0
45	61	37.0	34.5	63.0	8.0
48	64	37.0	34.5	66.0	8.0
50	66	38.0	35.5	70.0	9.5
53	69	38.0	35.5	73.0	9.5
55	71	38.0	35.5	75.0	9.5
58	78	42.0	39.5	78.0	10.5
60	80	42.0	39.5	80.0	10.5
63	83	42.0	39.5	83.0	10.5
65	85	42.0	39.5	85.0	10.5
68	88	41.5	39.0	90.0	11.0
70	90	48.5	46.0	92.0	11.5
75	99	48.5	46.0	97.0	11.5
80	104	48.5	46.0	105.0	11.5
85	109	48.5	46.0	110.0	11.5
90	114	52.0	49.5	115.0	13.0
95	119	52.0	49.5	120.0	13.0
100	124	52.0	49.5	125.0	13.0