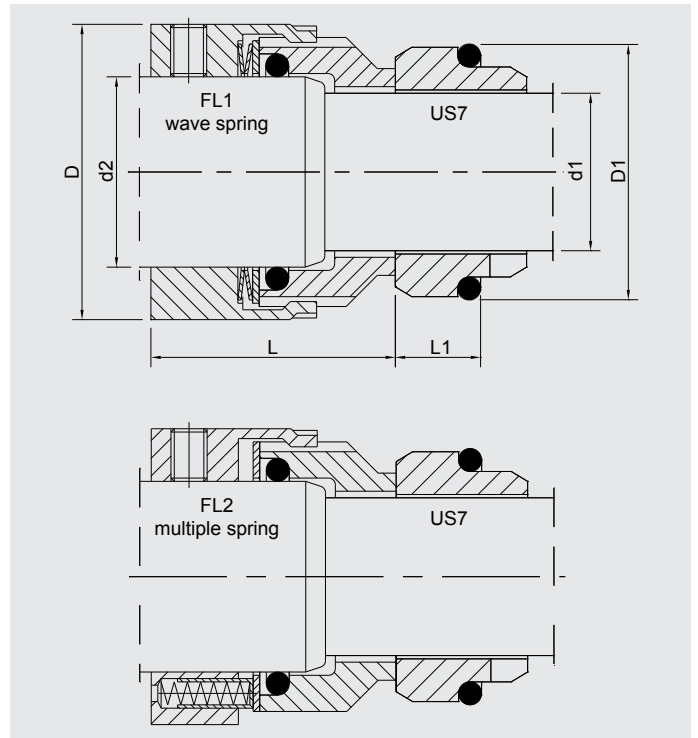
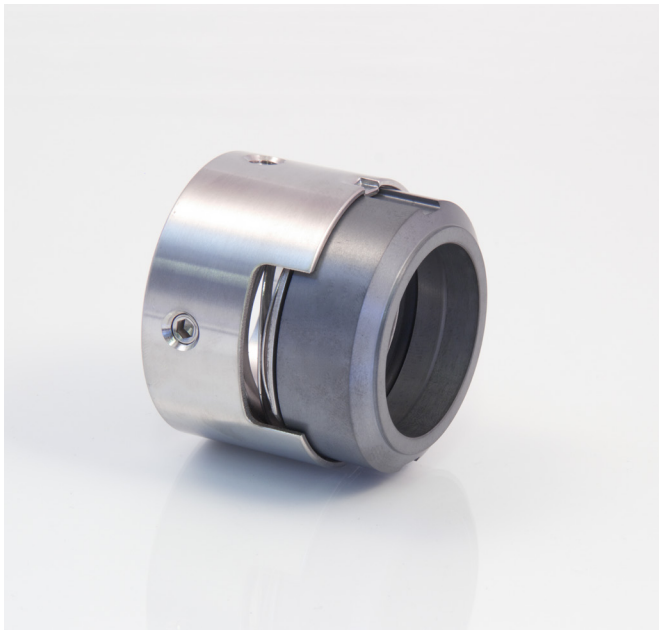


# Florence

O-ring mounted balance seals



## Technical features

- Single seal
- Multiple or wave spring
- Balanced
- Bi-directional
- To DIN 24960

## Operating limits

P = 348 PSI  
 T = -95 to 320°F  
 V = 65 ft/s

Description	Materials
Primary rings	silicon carbide, ceramic, carbon graphite, stainless
Mating rings	silicon carbide, carbon graphite
Secondary seals	NBR, EPDM, Viton
Metal parts	Stainless 304 / Stainless 316*

\*upon request

## Available products:

- Florence 1 (FL1)
- Florence 2 (FL2)

## Mating rings

- US7 (standard)
- US9 (carbon only)
- US8 (carbide face shrink-fitted)
- US3, US5, US10 (carbon only)

For more details on mating rings see page 29

FL1 - FL2				US7 - US9	
d1	d2	D	L	D1	L1
14	18	33	32.5	25.0	10.0
16	20	35	32.5	27.0	10.0
18	22	37	33.5	33.0	11.5
20	24	39	33.5	35.0	11.5
22	26	41	33.5	37.0	11.5
24	28	43	36.0	39.0	11.5
25	30	45	36.0	40.0	11.5
28	33	48	38.5	43.0	11.5
30	35	50	38.5	45.0	11.5
32	38	55	38.5	48.0	11.5
33	38	55	38.5	48.0	11.5
35	40	57	38.5	50.0	11.5
38	43	60	38.5	56.0	14.0
40	45	62	38.5	58.0	14.0
43	48	65	38.5	61.0	14.0
45	50	67	38.5	63.0	14.0
48	53	70	38.5	66.0	14.0
50	55	72	42.5	70.0	15.0
53	58	79	42.5	73.0	15.0
55	60	81	42.5	75.0	15.0
58	63	84	47.5	78.0	15.0
60	65	86	47.5	80.0	15.0
63	68	89	47.5	83.0	15.0
65	70	91	47.5	85.0	15.0
70	75	99	52.0	92.0	18.0
75	80	104	52.0	97.0	18.0
80	85	109	51.8	105.0	18.2
85	90	114	56.8	110.0	18.2
90	95	119	56.8	115.0	18.2
95	100	124	57.8	120.0	17.2
100	105	129	57.8	125.0	17.2