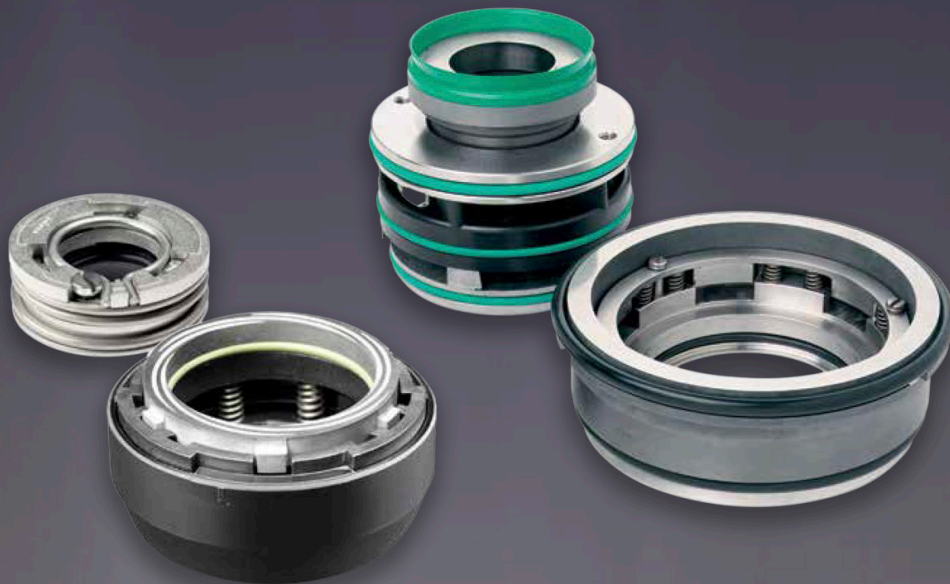


# CITY LINE

world wide seals



## Mechanical Seals type VERONA interchangeable with Flygt

### CITY LINE

9105 Seguin Drive Suite F - Pharr, TX 78577

Phone: 01 (956) 782 2400 X223

Fax: 01 (956) 782 2106

[info.usa@citylineseals.com](mailto:info.usa@citylineseals.com)

[www.citylineseals.com](http://www.citylineseals.com)

a Brand of:

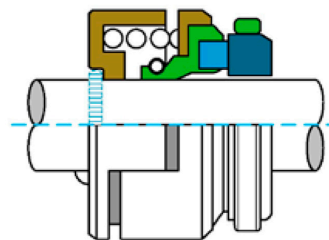


Meccanotecnica  
Umbra

a Story of Excellence

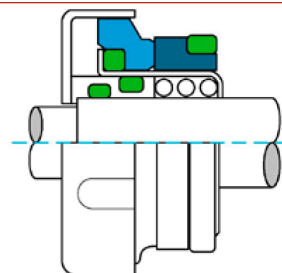
## Verona B

B, as in Bellow seal, referring to the bellow like secondary seal between the shaft and the rotating seal ring. The bellow seal is a reliable and sturdy construction that has served well in Flygt B pumps for many years. The single coil spring along with the bellow shaped secondary seal greatly reduces the risk of hampered spring motion and since there is always metal to metal contact with the oil housing, good heat dissipation is well provided for.



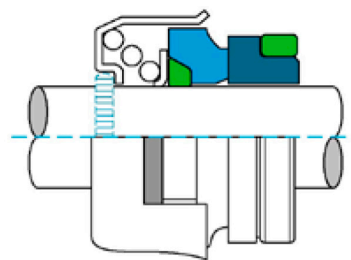
## Verona I

I, as in Internal spring seal, referring to the protected position of the spring between the shaft and seal rings. This design concept first appeared in the 2201 but has gained popularity also in C pumps because of its high resistance to clogging.



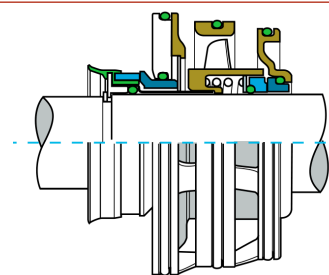
## Verona O

O, as in Open coil spring seal, is used in smaller B pumps. This is a straightforward and durable design that can withstand a lot of abuse. The single coil spring, the flexible mounted O-ring and well dimensioned seal rings assure long life in all common applications.



## Verona P

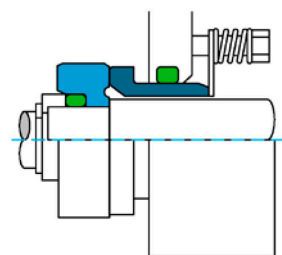
P, as in Plug-in seal, has a number of features that make it easier to handle than conventional single seals. The seal comprises an inner and outer seal in one unit that is simply “plugged in” to the product without any special tools being required. The seal is designed for wear and clog resistance, and is suitable for all applications and the toughest media. The plug-n seal is standard in all new products.



## Verona S

S, as in Sleeve seal, referring to the sleeve shape of this stationary seal ring. The sleeve seal is a well proven design that is used in mixers and medium sized C pumps. Since the spring is placed in the oil housing and the exterior is flushed, the sleeve seal has excellent resistance to clogging and wear.

There is also an inverted form of this seal, where the rotating ring is sleeve shaped, which is used in 2151 and 2084.



DIAMETER (mm)	CITY LINE type	FLYGT type	Materials	Pump Model
20	Verona B	TYPE B - BELLOW SEAL	UUV	2024, 2066, 2075, 2101, 3065, 3080
20	Verona B	TYPE B - BELLOW SEAL	QQV	2024, 2066, 2075, 2101, 3065, 3080
22	Verona B	TYPE B - BELLOW SEAL	UUV	2070, 2102/040, 3082, 2040, 2071, 2102/041, 2102/210, 2102/220
22	Verona B	TYPE B - BELLOW SEAL	QQV	2070, 2102/040, 3082, 2040, 2071, 2102/041, 2102/210, 2102/220
25	Verona B	TYPE B - BELLOW SEAL	UUV	
25	Verona B	TYPE B - BELLOW SEAL	QQV	
28	Verona B	TYPE B - BELLOW SEAL	UUV	2082, 2090, 2125, 2140, 3101
28	Verona B	TYPE B - BELLOW SEAL	QQV	2082, 2090, 2125, 2140, 3101
30	Verona B	TYPE B - BELLOW SEAL	UUV	
30	Verona B	TYPE B - BELLOW SEAL	QQV	
35	Verona B	TYPE B - BELLOW SEAL	UUV	
35	Verona B	TYPE B - BELLOW SEAL	QQV	
35	Verona I	TYPE I - INTERNAL SPRING SEAL	UUV	2151/010, 3126/090, 3126/180, 2084, 2135, 2151/011, 2151/050, 3126/091, 3126/280, 3126/290
20	Verona O	TYPE O - OPEN COIL SEAL	UUV	2060, 3041/281, 3060, 3067/170, 3067/250, 3068, 3085/120, 3085/170, 3085/180, 3085/890
25	Verona O	TYPE O - OPEN COIL SEAL	UUV	3102
35	Verona O	TYPE O - OPEN COIL SEAL	UUV	3126/091, 3126/280, 3126/290, 3126/181, 3127, 4440, 5530
45	Verona O	TYPE O - OPEN COIL SEAL	UUV	2201, 3140, 3152, 4650, 4660 (SUPERIORE)
45	Verona S	TYPE S - SLEEVE SEAL	UUV	2201, 3140, 3152, 4650, 4660 (INFERIORE)
30	Verona S	TYPE S - SLEEVE SEAL	UUV	
35	Verona S	TYPE S - SLEEVE SEAL	UUV	2151/010, 3126/090, 3126/180
60	Verona S	TYPE S - SLEEVE SEAL	UUV	2250, 2290, 3200, 600, 3170, 3201, 4670, 4680, 7045
80	Verona S	TYPE S - SLEEVE SEAL	UUV	3230, 3305, 3357, 3231, 3306, 3356, 3300, 3355, 7050, 7051, 7060, 7076, 7055, 7061, 7080
20	Verona P	TYPE P - PLUG-IN SEAL	UU/UU/PLASTIC	1520, 2610, 2620, 2630, 2640, 4610, 4620
25	Verona P	TYPE P - PLUG-IN SEAL	UU/UU/PLASTIC	2660, 4630, 4640
35	Verona P	TYPE P - PLUG-IN SEAL	UU/UU/PLASTIC	2670, 3153, 5100 (.210, .211, .220, .221)
45	Verona P	TYPE P - PLUG-IN SEAL	UU/UU/PLASTIC	3171, 4650, 4660, 5100 (.250, .251, .260, .261)
60	Verona P	TYPE P - PLUG-IN SEAL	UU/UU/PLASTIC	3202, 4670, 4680, 5100 (.300, .310), 5150 (.300, .310)